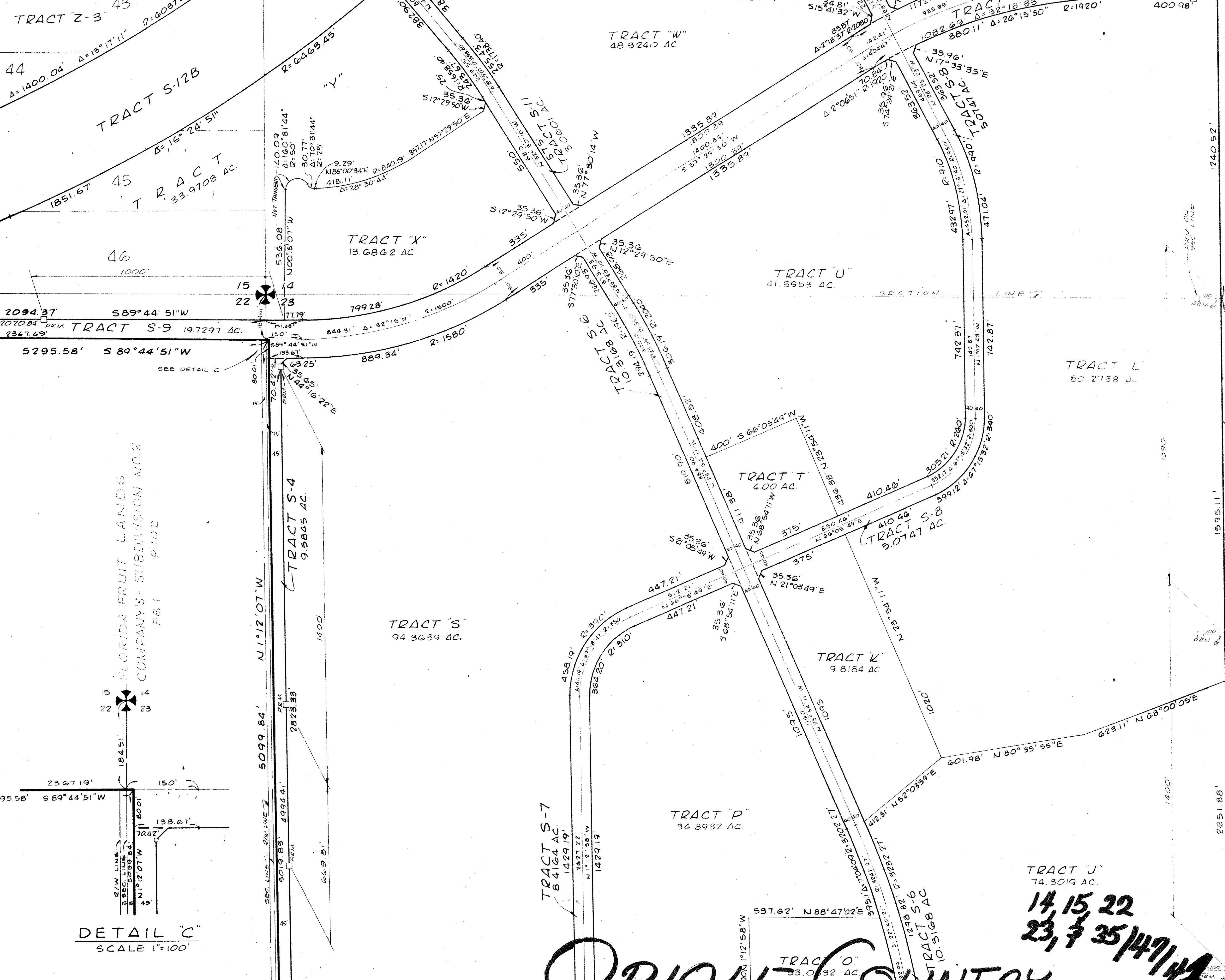


BOUNDARY PLAT OF ORIOLE COUNTRY

178

A PLANNED UNIT DEVELOPMENT

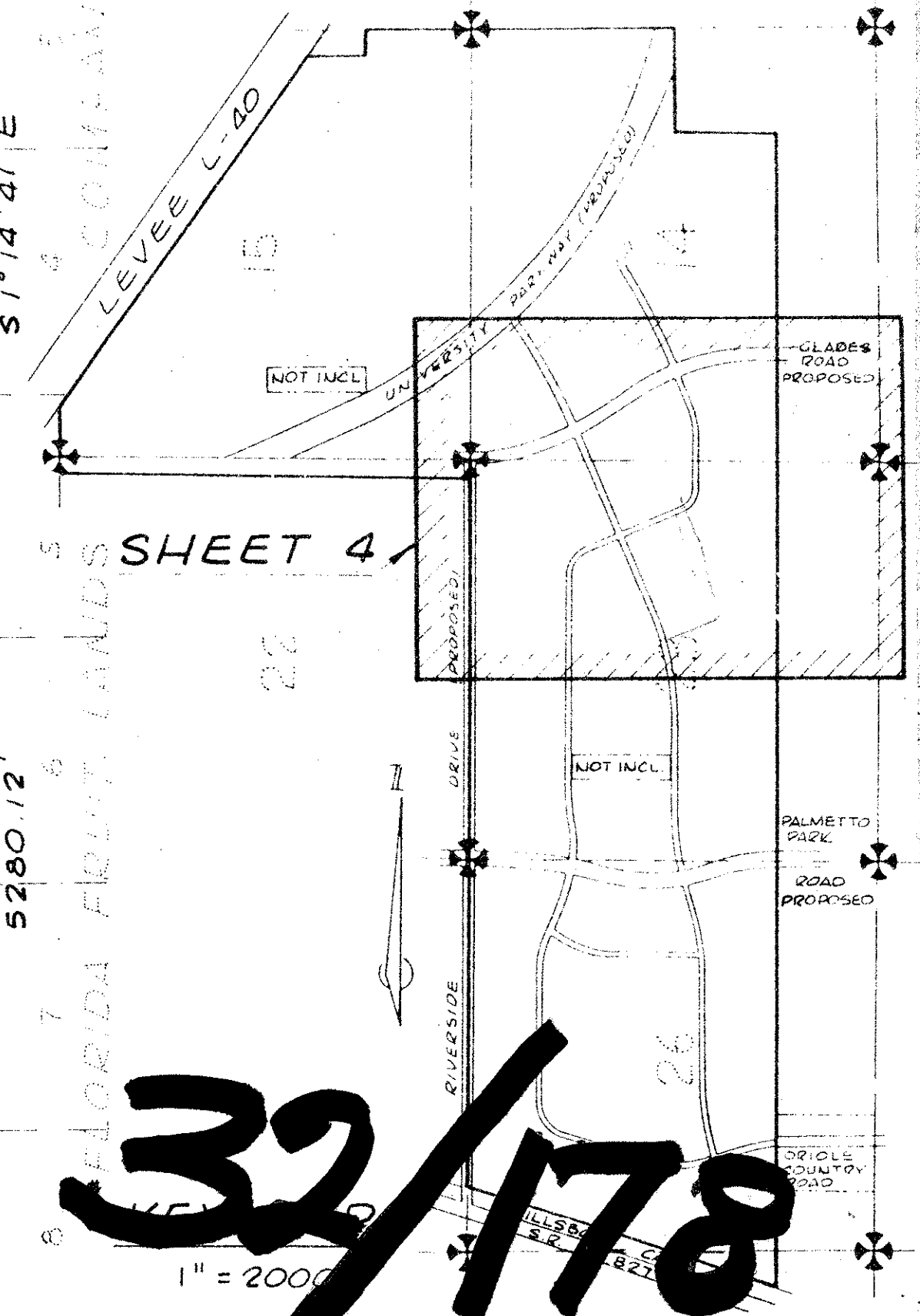
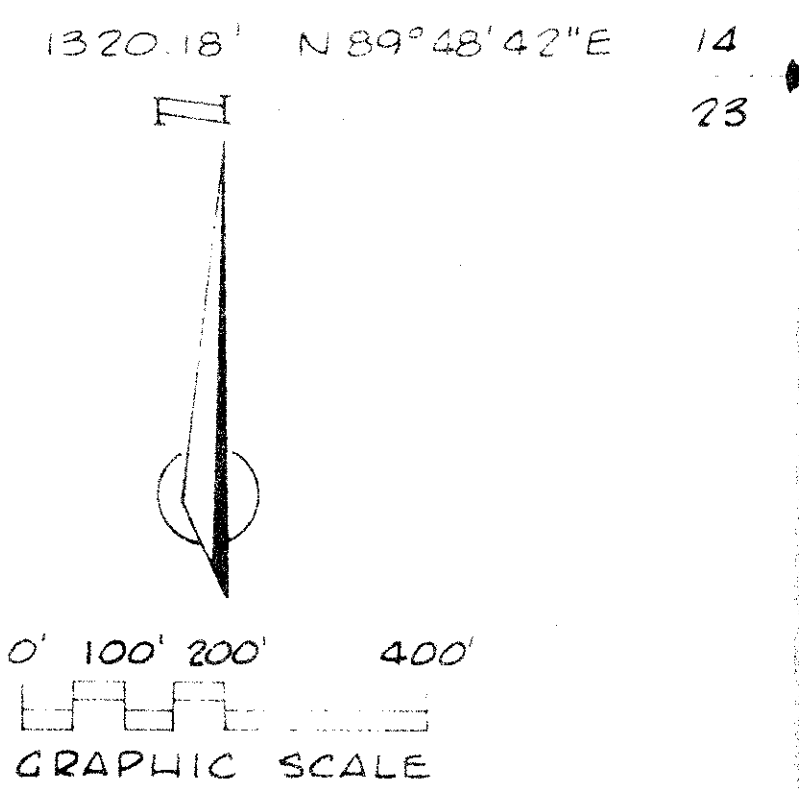
OWNED BY PALM BEACH COUNTY, FLORIDA
CRB 2492 P 347



MATCH LINE - SEE SHEET 6

MATCH LINE - SEE SHEET 3

THIS IS EASEMENT (WIDTH UNDEFINED) RECORDED IN DEED BOOK 1068 AT P 89



DETAIL "C"
SCALE 1"=100'

ORIOLE COUNTRY

14, 15, 22
23, 35/47/41

BOUNDARY PLAT OF ORIOLE COUNTRY	
Date	
Scale	1" = 200'
Sheet	4
of	6
File No	BF-2250